

Archives of Internal Medicine

Copyright © 1988 by the
American Medical Association

EDITORIAL BOARD

Editor,
James E. Dalen, MD
Department of Medicine
University of Massachusetts
Medical School
Worcester, Mass 01655

Deputy Editor
Robert J. Goldberg, PhD
Worcester, Mass

Associate Editors
Peter H. Levine, MD
Worcester, Mass

Neil R. Blacklow, MD
Worcester, Mass

Editorial Assistant
Melissa Derby
Worcester, Mass

Joseph S. Alpert, MD, Worcester, Mass
O'Neill Barrett, Jr, MD, Columbia, SC
Dick D. Briggs, Jr, MD, Birmingham, Ala
Marvin I. Dunn, MD, Kansas City, Kan
Alvan R. Feinstein, MD, New Haven, Conn
Thomas F. Ferris, MD, Minneapolis
Jack Hirsh, MD, Hamilton, Ontario
Stuart Levin, MD, Chicago
Richard W. Light, MD, Long Beach, Calif
Robert C. Little, MD, Augusta, Ga
Kevin M. McIntyre, MD, JD, Boston
Robert E. Rakel, MD, Houston
Mark Slegler, MD, Chicago
David H. Spodick, MD, Worcester, Mass
Steven Swiryn, MD, Evanston, Ill
John G. Weg, MD, Ann Arbor, Mich

Book Editor
O'Neill Barrett, Jr, MD

Basic Science Concepts
Robert C. Little, MD

The ARCHIVES OF INTERNAL MEDICINE (ISSN 0003-9926) is published monthly by the American Medical Association, 535 N Dearborn St, Chicago, IL 60610, and is an official publication of the Association. Second-class postage paid at Chicago, and at additional mailing office.

CHANGE OF ADDRESS—POSTMASTER, send all address changes to Caryl L. Wertheimer, Director of Fulfillment, 535 N Dearborn St, Chicago, IL 60610. Notification of address change must be made at least six weeks in advance, include both old and new addresses, a recent mailing label, and your new zip code.

Vol 148

No. 6

June 1988

EDITORIALS

Effect of Potassium Depletion by Thiazides 1265
Herbert G. Langford, MD, Jackson, Miss

Informed Consent 1266
Julia E. Connelly, MD, Orange, Va

Changing Group A Streptococci 1268
Gene H. Stollerman, MD, Bedford, Mass

Intermediate Care 1270
Mary E. Charlson, MD, New York, Frederic L. Sax, MD, Bethesda, Md

ORIGINAL INVESTIGATIONS

Thiazide Therapy Is Not a Cause of Arrhythmia In Patients With Systemic Hypertension 1272
Vasilios Papademetriou, MD; James F. Burris, MD; Aldo Notargiacomo; Ross D. Fletcher, MD; Edward D. Freis, MD, Washington, DC

Use of Sequential Cardiac Enzyme Analysis in Stratification of Risk for Myocardial Infarction in Patients With Unstable Angina 1277
John Quale, MD, Brooklyn, NY; Carey Kimmelstiel, MD, Worcester, Mass; Gregg Lipschik, MD, Bethesda, Md; Stanley Schrem, MD, Brooklyn, NY

The Effects of Antihypertensive Agents on Serum Lipids and Lipoproteins 1280
Claude K. Lardinois, MD, Reno, Nev; Sherry L. Neuman, Davis, Calif

Methodologic Problems in Exercise Testing Research 1289
Robert Detrano, MD, PhD; Kenneth P. Lyons, MD; Gilberto Marcondes, MD; Nabil Abbassi, MD; Victor F. Froelicher, MD, Long Beach, Calif; Andras Janosi, MD, Budapest

Service vs Education in Internal Medicine Residency 1296
Eleanor Z. Wallace, MD, New Hyde Park, NY

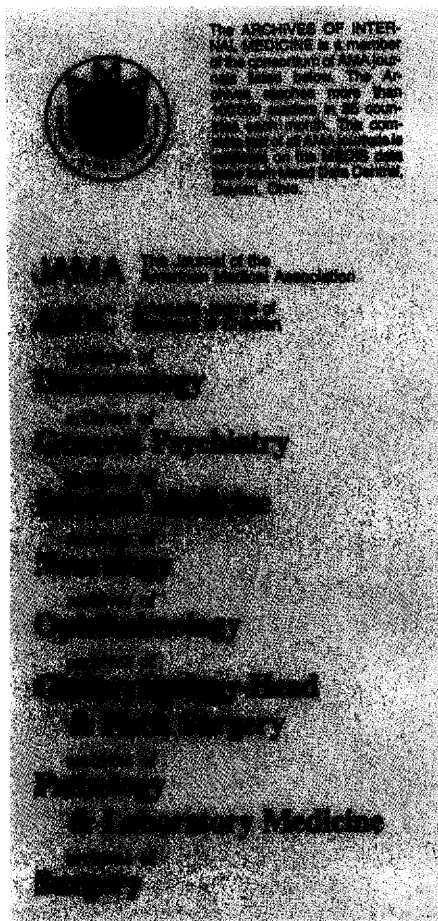
Human Immunodeficiency Virus Isolation Studies and Antibody Testing 1299
Doreen B. Brettler, MD; Ann D. Forsberg, MA; Peter H. Levine, MD; Charla A. Andrews, MS; Sharon Baker, MT; John L. Sullivan, MD, Worcester, Mass

Age, Sex, and Race Inequality in Renal Transplantation 1305
Carl M. Kjellstrand, MD, Stockholm

Low Serum Creatinine Levels in Severe Hepatic Disease 1313
Toshikazu Takabatake, MD; Hiromichi Ohta, MD; Yoh-ichi Ishida, MD; Hiromoto Hara, MD; Yasuyuki Ushioji, MD; Nobu Hattori, MD, Kanazawa, Japan

Continued on page 1239.

1237



The ARCHIVES OF INTERNAL MEDICINE is a member of the consortium of journals published by the American Medical Association. The Archives of Internal Medicine, along with the Archives of Pediatrics and Adolescent Medicine, the Archives of Ophthalmology, the Archives of Neurology and Psychiatry, the Archives of Dermatology, and the Archives of Surgery, are published by the American Medical Association, 535 N Dearborn St, Chicago, IL 60610.

Continued from page 1237.

Physician Practices in the Treatment of Pulmonary Embolism and Deep Venous Thrombosis	1321
Arthur P. Wheeler, MD; Robert D. B. Jaquiss, MD; John H. Newman, MD, Nashville, Tenn	
Severe Soft-Tissue Injury Following Intravenous Infusion of Phenytoin	1329
Robert F. Spengler, ScD, Janet B. Arrowsmith, MD, Atlanta; David J. Kilarski, MS; Clyde Buchanan, MS; Larry Von Behren, MD; Donald R. Graham, MD, Springfield, Ill	
Renal Function in Patients With Obstructive Sleep Apnea	1337
Jean Krieger, MD; Jean-Louis Imbs, MD; Mariette Schmidt, PhD; Daniel Kurtz, MD, Strasbourg, France	
Severe <i>Chlamydia trachomatis</i> Pneumonia in a Patient With No Immune Deficiency	1345
Zemira Samra, PhD; Arie Pik, MD; Ahuva Guidetti-Sharon, MD; Dan Ben Yaakov, MD, Zerifin, Israel	
Deep Vein Thrombosis After Hip Surgery Among Thai	1349
Vichai Atchartakarn, MD; Kritsana Pathepchotiwong, MS; Sommart Keorochana, MD; Charindr Eurvilaichit, MD, Bangkok, Thailand	
Reversible Panhypopituitarism due to Cushing's Syndrome	1358
Kenji Watanabe, MD; Akira Adachi, MD; Ryuichi Nakamura, MD, Tochigi, Japan	
Bronchoalveolar Mastocytosis in Farmer's Lung Is Related to the Disease Activity	1362
Leif Björner, MD, PhD, Umeå, Sweden; Anna Engström-Laurent, MD, PhD, Uppsala, Sweden; Rune Lundgren, MD, PhD, Leif Rosenhall, MD, PhD, Umeå, Sweden; Roger Hällgren, MD, PhD, Uppsala, Sweden	
The Unproven Utility of Preoperative Urinalysis	1370
Valerie A. Lawrence, MD, Kurt Kroenke, MD, San Antonio, Tex	
Periglomerular Granulomatosis	1377
Aniana Olliet, MD, Manuel Praga, MD, Madrid; Fernando Vidaur, MD, Alex Elósegui, MD, San Sebastian, Spain; Gabriel Usera, MD, Ignacio Bello, MD, Madrid	
Two Models of Implementing Informed Consent	1385
Charles W. Lidz, PhD, Pittsburgh; Paul S. Appelbaum, MD, Worcester, Mass; Alan Meisel, JD, Pittsburgh	
Coping With Diagnosis Related Groups	1393
Donald D. Tresch, MD; Edmund H. Duthie, Jr, MD; Margaret Newton, MD; Bonnie Bodin, RN, Milwaukee	
Decreases in Mortality on a Large Urban Medical Service by Facilitating Access to Critical Care	1403
Cory M. Franklin, MD, Chicago; Eric C. Rackow, MD, North Chicago, Ill; Bashir Mamdani, MD; Steven Nightingale, MD; Gerald Burke, MD, Chicago; Max H. Weil, MD, PhD, North Chicago, Ill	
Gabexate as a Therapy for Disseminated Intravascular Coagulation	1409
Shigenobu Umeki, MD, PhD; Michifumi Adachi, MD; Masatoshi Watanabe, MD; Susumu Yaji, MD; Rinzo Soejima, MD, Okayama, Japan	

James H. Sammons, MD, Executive Vice-President

James S. Todd, MD, Senior Deputy Executive Vice-President

Kenneth E. Monroe, Deputy Executive Vice-President

Theodore R. Chilcoat, Jr, Assistant Executive Vice-President

M. Roy Schwarz, MD, Assistant Executive Vice-President

George D. Lundberg, MD, Vice-President, Scientific Information

John T. Baker, Vice-President, Publishing

Norman D. Richey, Director, Publication Production and Printing Division

Lee A. Parent, Director, Circulation-Fulfillment Division

Dennis Joseph Dennehy, Director, Advertising Sales and Promotion Services Division

Thomas J. Carroll, Director, Department Advertising Communications

Raymond Christian, Director, Advertising Services Department

SUBSCRIPTION RATES—The subscription rates for the Archives of Internal Medicine are as follows: \$42 for one year, \$74 for two years in the United States and US possessions; all other countries, one year, \$56; two years, \$104 (add \$15 surcharge for each one-year subscription, \$30 for two years for air delivery to the United Kingdom, Europe, Bangladesh, India, Nepal, or Sri Lanka). Rates for subscriptions for delivery to Australia, Japan, New Zealand, or South Korea are available through respective agents. **Special rates for residents and medical students in the United States and US possessions are available.** Address inquiries to the American Medical Association, Circulation and Fulfillment Division, 535 N Dearborn St, Chicago, IL 60610. Phone: (312) 280-7168.

Continued on page 1243.

PUBLICATION STAFF
 Offices: 535 N Dearborn St,
 Chicago, IL 60610

Managing Editor and Director
AMA Specialty Journals:
 Michael D. Springer

Production Manager:
 Marlene M. Hinsch

Assistant Production Manager:
 John R. Sayban

Editorial Processing Manager:
 Cheryl Iverson

Assistant Editorial Processing Manager:
 Paula Giltman

Permissions and Graphic Design Manager:
 Dennis J. Shipley

Staff Assistants:
 Diane Darnell Bonnie Van Clevon

Copy Editing:
 Edward Jyväskylä (Supervisor)
 Vickey Golden (Free-lance Coordinator)
 Richard Díaz (Senior Copy Editor)
 Dee E. Egger
 Daniel Knight
 Donald N. La Petina

Production Supervisors:
 Betty Frigerio (Advertising)
 Thomas J. Handrigan (Illustrations)
 Elizabeth Petrikenas (Proofreading)
 Mary C. Steermann (Editorial)
 JoAnne Weiskopf (Layout)

Proofreading:
 Jennifer Reiling Barbara Wojtowicz
 Christine M. Smith

Art and Senior Production Assistants:
 Mary C. Beauregard Debra Lucas
 Cari Biamonte Dorothy Patterson
 Karen Branham Susan Price
 Jerri Hall-Gortowski Deirdre Rittenhouse
 Sally Hoyt Ellen Yoshihara

Production Assistants:
 Darlene E. Filips Anita Henderson

Manuscript Records:
 Lenette Gardner

Editorial Assistant:
 Jean Schaffner

Indexing:
 Norman Frankel (Supervisor)
 Susan McClelland
 Mary Kay Tinerella

Advertising Principles.—Each advertisement in this issue has been reviewed and complies with the principles governing advertising in AMA scientific publications. A copy of these principles is available on request. The appearance of advertising in AMA publications is not an AMA guarantee or endorsement of the product or the claims made for the product by the manufacturer.

ADVERTISING OFFICES: Eastern: 600 Third Ave, Suite 3700, New York, NY 10016 (Manager: Robert C. Corcoran [212-867-8640]); Representatives: Phillip B. Altamore, John L. Reeves, Wayne M. Wickman); Midwest/Farwest: 535 N Dearborn St, Chicago, IL 60610 (Manager: Thomas J. Carroll [312-280-7182]); Representative: John P. Cahill)

Continued from page 1239.

Listeriosis in the United States: 1980-1982 1416
 Carol A. Ciesielski, MD; Allen W. Hightower, MS;
 Susan K. Parsons, MD; Claire V. Broome, MD, Atlanta

'Toxic Strep Syndrome' 1421
 Thaddeus Bartter, MD; Andre Dascal, MD; Karen Carroll, MD;
 Frederick J. Curley, MD, Worcester, Mass

Fatal Pulmonary Embol in Hospitalized Patients 1425
 Israel Rubinstein, MD; David Murray, MD; Victor Hoffstein, PhD, MD, Toronto

SPECIAL ARTICLES

The Stress of Residency 1428
 Paula S. Butterfield, PhD, Columbus, Ohio

The Crisis Facing Printed Medical Literature 1439
 Arthur W. Hafner, PhD, William P. Whitely, Chicago

CLINICAL OBSERVATIONS

Chronic Meningococcal Meningitis 1441
 Michael S. Rosen, MD; Bennett Lorber, MD; Allen R. Myers, MD, Philadelphia

Graves' Disease and Thyroxine-Binding Globulin Deficiency 1445
 Elisabetta Dall'Aglio, MD; Giuseppe Robuschi, MD; Roberta Minelli, MD;
 Manrico Guerra, MD; Marina Bentivoglio, MD; Elio Roti, MD, Parma, Italy

Myocardial Infarction, Severe Reversible Ischemia, and Shock Following Excess Thyroid Administration in a Woman With Normal Coronary Arteries 1450
 Gary A. Bergeron, MD, San Francisco; Richard Goldsmith, MD, Cincinnati;
 Nelson B. Schiller, MD, San Francisco

Pyomyositis in a Patient With Progressive Systemic Sclerosis 1453
 Robert L. Minor, Jr, MD; Stephen Baum, MD;
 Konrad S. Schulze-Deirieu, MD, Iowa City

Epidermolysis Bullosa Acquisita and Crohn's Disease 1457
 Bruno Labellie, MD; Jean-Louise Gineston, MD; Jean-Paul Denoeux, MD;
 Jean-Pierre Capron, MD, Amiens, France

Coma as a Presenting Sign of Epstein-Barr Encephalitis 1459
 Hendrik E. Demey, MD; Jean-Jacques Martin, MD; Raphael M. Leus, MD;
 Carla J. Moeremans, MD; Leo L. Bossaert, MD, Antwerp, Belgium

Chyloptysis (Chylous Sputum) due to Thoracic Lymphangiectasis With Successful Surgical Correction 1465
 J. Scott Sanders, MD, Mankato, Minn; Edward C. Rosenow III, MD;
 Jeffrey M. Piehler, MD; Peter Gloviczki, MD; Larry R. Brown, MD, Rochester, Minn

REGULAR DEPARTMENTS

Books 1256

Editor's Correspondence 1468

Instructions for Authors 1247

Index to Advertisers 1472

CORRECTION

Nosocomial Pneumococcal Bacteremia 1279
 Salvador Alvarez, MD; Juan Guarderas, MD;
 Charles G. Shell; Shirley Holtsclaw-Berk, MS;
 Steven L. Berk, MD, Johnson City, Tenn